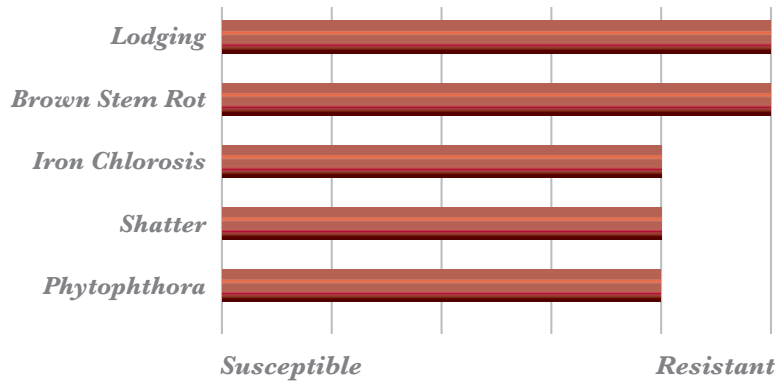




ARMOR

RM: 3.0 / INDETERMINATE

30-E39



— Plant Height —
MEDIUM-TALL

— Cyst Nematode —
R3, MR14

TRAIT PACKAGES: Enlist E3

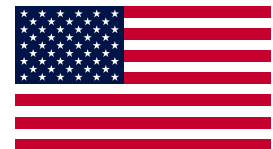
Trait	Value
CHARACTERISTICS	
Enlist	Enlist
Maturity	3.0
Plant Type	
Plant Height	Medium-Tall
Lodging	
Shatter	M. Resistant
Flower Color	
Hilum Color	Imp. Black
Pubescence	
Pod Color	Tan
Seed Size	
DISEASE RATINGS	
Phytophthora	M. Resistant
Phytophthora Gene	
Sudden Death	M. Resistant
Frogeye Leaf Spot	
Stem Canker	—
Cyst Nematode	
Southern RKN	—
Brown Stem Rot	
Iron Chlorosis	M. Resistant
White Mold	
RESPONSE RATINGS	
Chloride Tolerance	—

Soybean Rating System: There are many ways to evaluate diseases, agronomic characteristics, etc. Since many of these ratings are subjective, an explanation is listed here: **Resistant** implies no or very slight disease presence when conditions are favorable for development. **Moderately Resistant (M. Resistant)** implies slight disease presence when conditions are favorable for development. **Moderate** implies some disease presence when conditions are favorable for development. **Moderately Susceptible (M. Susceptible)** implies significant disease presence when conditions are favorable for development. **Susceptible** implies very significant disease presence when conditions are favorable for development.

These are general recommendations based on data taken from breeder, university, company trials and producer field observations and do not constitute a warranty of fitness or guarantee of performance for a particular use. • Double cropping Maturity Group IVs can be extremely risky without adequate irrigation and proper variety selection. • **Upright** implies a narrow canopy with very little branching. Intermediate implies a wider canopy with some branching. **Bushy** implies a wide canopy. **Imp. Black** = Imperfect Black. **NG** = No Gene. **—** = Not Available. **RR2X** = Roundup Ready 2 Xtend®. **RR2Y** = Roundup Ready 2 Yield®. **LL** = LibertyLink®. **GT** = Glyphosate Tolerant. **CONV** = Conventional.

Unauthorized propagation, seed multiplication, and/or sale, offering for sale, exchange, delivery, transfer, import, or export of seed of this variety is prohibited. Violators of the U.S. Plant Variety Protection ACT (PVPA) will be subject to proceedings under federal and state law and may be liable for money damages. Seed of varieties protected or applied for under 1994 amendments to the PVPA cannot be sold for reproductive purposes without permission from the owner of this variety.

Ratings are general. Soil and environment may adversely affect performance.



PROUD MEMBER OF U.S. AGRICULTURE

ArmorSeed.com

Thanks for trusting Armor on your farm.